

SONOMA ISLES PLAT 3

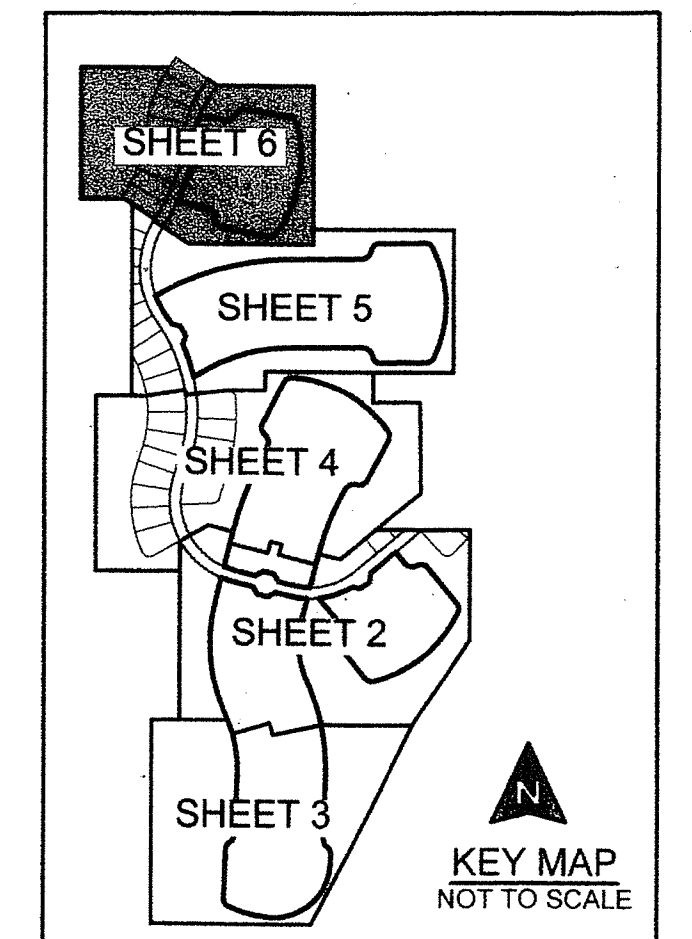
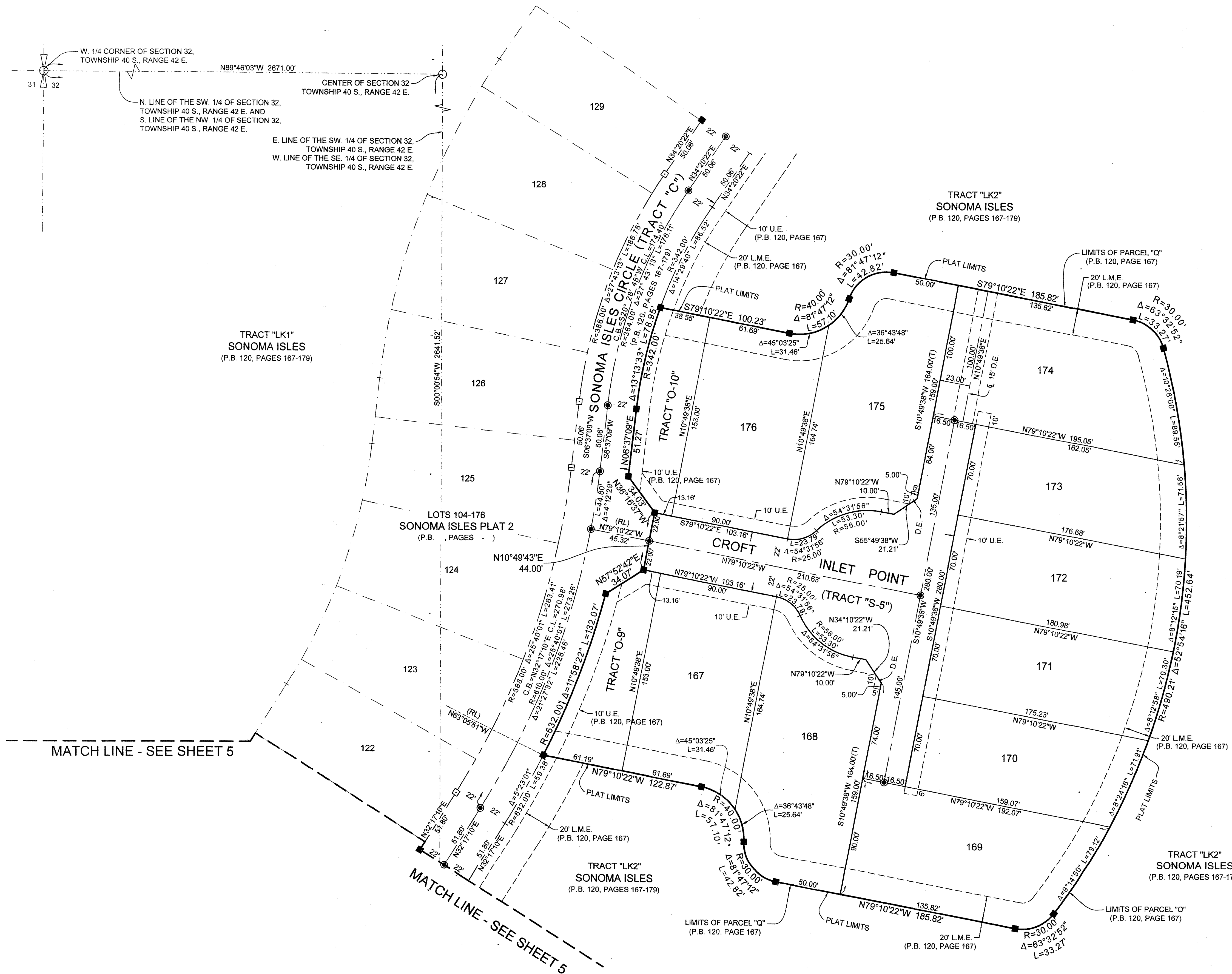
LYING IN SECTION 32, TOWNSHIP 40 SOUTH, RANGE 42 EAST AND SECTION 5, TOWNSHIP 41 SOUTH, RANGE 42 EAST,
TOWN OF JUPITER, PALM BEACH COUNTY, FLORIDA, BEING A RE-PLAT OF PARCELS "K", "L", "M", "O" AND "Q", PLAT OF SONOMA ISLES,
AS RECORDED IN PLAT BOOK 120, PAGES 167 THROUGH 179, INCLUSIVE, PUBLIC RECORDS OF PALM BEACH COUNTY, FLORIDA.

SHEET 6 OF 6

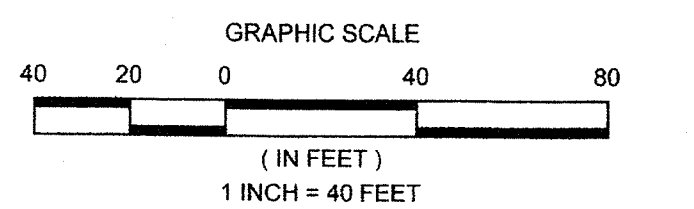
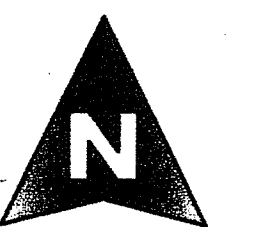
AUGUST, 2016

97

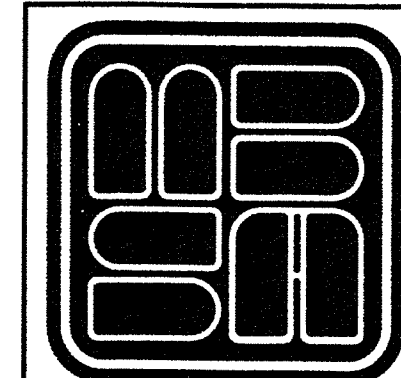
COUNTY OF PALM BEACH)
STATE OF FLORIDA) SS
THIS PLAT WAS FILED FOR RECORD AT)
M. THIS DAY OF)
2016, AND DULY)
RECORDED IN PLAT BOOK NO.)
ON PAGE THRU)
SHARON R. BOCK,
CLERK AND COMPTROLLER
BY: _____, D.C.



KEY MAP
NOT TO SCALE



SHEET 6 OF 6



MICHAEL B. SCHORAH & ASSOCIATES, INC.
1850 FOREST HILL BLVD., SUITE 206
WEST PALM BEACH, FLORIDA 33406
EB# 2438 TEL. (561) 968-0080 FAX. (561) 642-9726 LB# 2438

SONOMA ISLES PLAT 3